

Creative Characters from the Dune’s Story



Little Tern

Little Tern is tame and shy but likes to play with friends, and comes to Taiwan to beat the heat only in the summer.



Cuban Bast

Cuban Bast usually wears camouflage pants and occasionally wears a yellow skirt.



Baby Dune

Baby Dune changes style frequently and considers itself quite handsome. Every day, Baby Dune is worried about which side to part its bush bangs.



Wind Turbines

Wind Turbines likes to flap the wings and spins against the wind. It likes to keep a box of power-generating luggage under the feet.



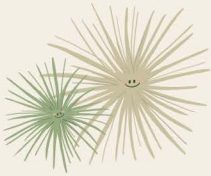
Bunker

Looking serious, but Bunker is often cracked up by the bizarreness of Baby Dune.



Kentish Plover

Introvert and timid, however, Kentish Plover is sometimes quirky and likes jogging.



Littoral Spine Grass

Optimistic and outgoing, Littoral Spine Grass like jogging and becomes the key driving force for maintaining the coastal environment.



Horn-eyed Ghost Crab

Running race winner in the world of terrestrial crabs, always carrying a retractable rake on the back for cleaning the beach.



Caota Sand Dunes Introduction

The Caota Sand Dunes are located between the mouth of the Dayuan Laojie River and the mouth of the Guanyin Daku River. They stretch for about 8.1 kilometers and are the tallest and widest coastal sand dunes on the Taoyuan coast.

The name "Caota" originated from the low-lying terrain with stagnant water, muddy areas, and long grass in the past. This resulted in the formation of the "back wetland" behind the sand dunes.

The Taoyuan City Government has constructed the Dayuan Chaoyinhai Seascape Trail and the Guanyin Baishatun Seascape Trail, allowing tourists to appreciate the unique geological landscape of the sand dunes and the rich and diverse coastal ecology up close.



Zoning management

Due to its unique geological and topographic features, coastal protection benefits, and environmental education values, Caota Sand Dunes were designated as the Taoyuan City Geopark by the Taoyuan City Government in June 2020, and zoning management measures were implemented.



| General Zone | 244 ha

This area is open to public access, providing uses for environmental education, recreation, and maintenance of the wind turbines.



| Core Zone | 18 ha

For the area with the most complete dune pattern, in order to protect its special landform and geology, only academic research and environmental education applications are provided.



| Restoration Zone | 22 ha

For the area of Baozan landfill site and Beigang landfill site, and carry out environmental monitoring, only staff can enter.

Caota Sand Dunes Geopark

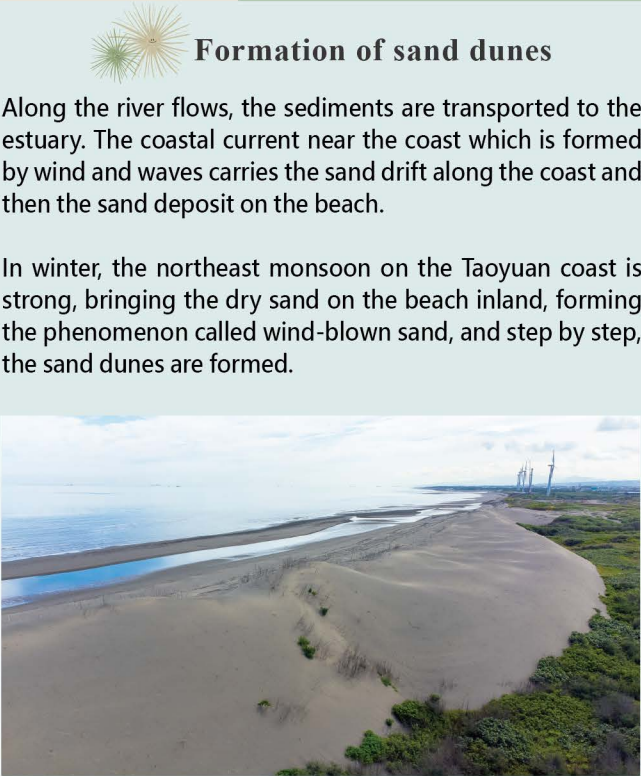
[Taoyuan City Geopark Tour Brochure]

※ Do not enter at night or in bad weather.



草漯沙丘地質公園

August 2023 version



Formation of sand dunes

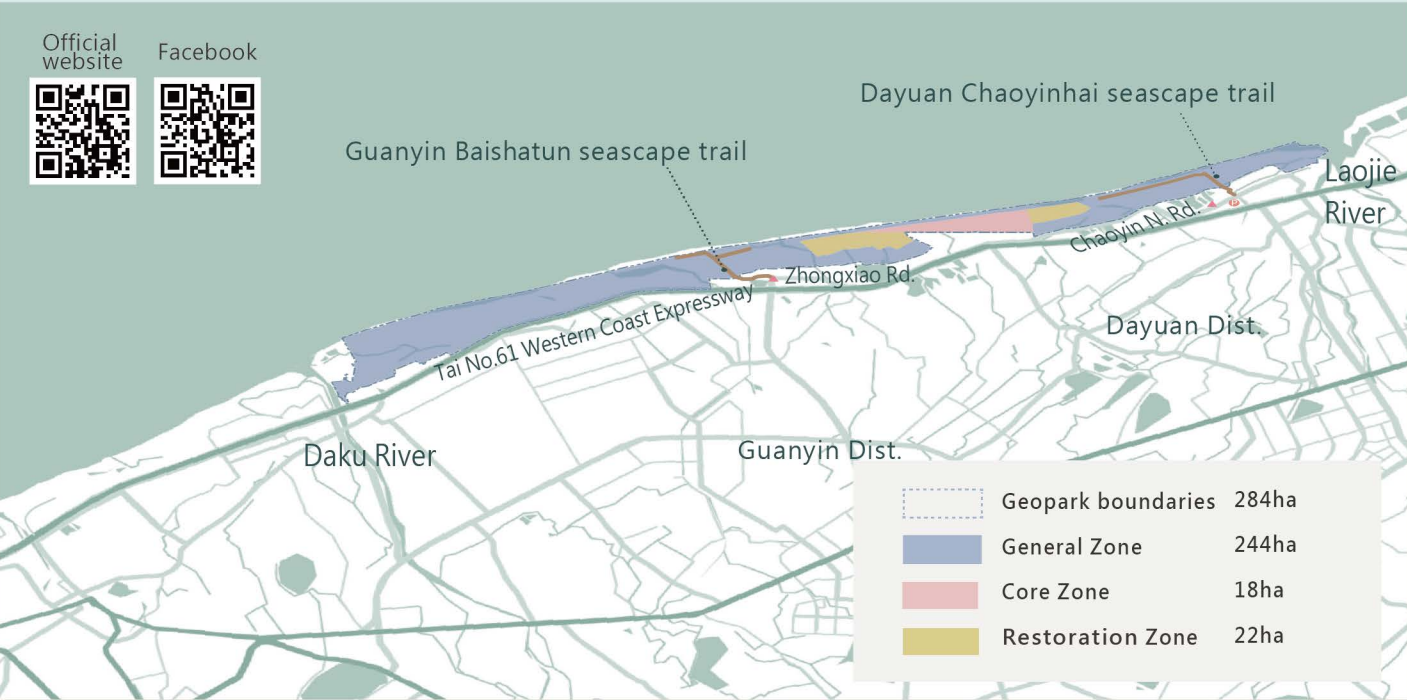
Along the river flows, the sediments are transported to the estuary. The coastal current near the coast which is formed by wind and waves carries the sand drift along the coast and then the sand deposit on the beach.

In winter, the northeast monsoon on the Taoyuan coast is strong, bringing the dry sand on the beach inland, forming the phenomenon called wind-blown sand, and step by step, the sand dunes are formed.

Official website

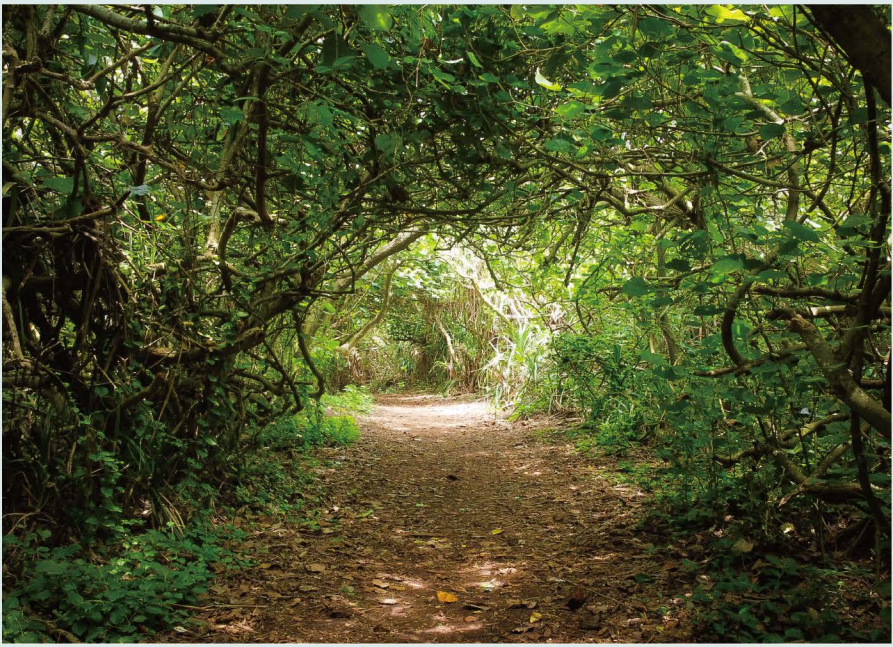


Facebook





Dayuan Chaoyinhai Seascape Trail



Next to the old houses, you can explore along the green tunnels that residents walk out of, as if drilling into the Totoro Tunnel in Miyazaki's animation.

As the fluctuating light points come to an end, the white wind turbine appears on one side.

You can choose to step up and look out over the dunes and sea views on the platform, or cross the path, stroll through the dunes, and head to the beach to enjoy the sunset.

Traffic Information



Plant Collection of Dunes



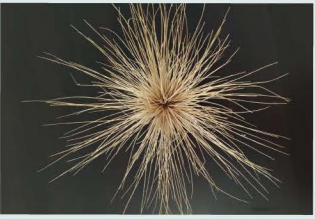
Cuban Bast



Screw-pine



Horsetail Tree



Littoral Spine Grass



Beach Vitex



Beach Morning Glory



Sea Mango



Sea Lettuce



New Zealand Spinach



Dodder



Animal Collection of Dunes



Chinese Egret



Little Tern



Horn-eyed Ghost Crab



Kentish Plover



Red-clawed Crab



Chinese Ghost Crab



Guanyin Baishatun Seascape Trail



Walking past the swaying shrubs on both sides, it was the blue sky and the rolling sand dunes that came into view.

On both sides of the trail, various unique coastal plants are flourishing.

Following the footsteps of the predecessors as you walk up the sand dunes, you can feel the grain of sand leaping with the wind blowing. Sand patterns change over time.

On top of the wide sand dunes, you can enjoy the panoramic view of the sea. At dusk, the setting sun and rosy clouds are like a filter, so beautiful!

Traffic Information

